

OFFBEAT SUAVE *Est.* MMXV

THROWAWAY TWENTY

SWEATPANTS + SWEATSHORTS



HOW TO MEASURE

WAIST

Measure around the natural waistline, which is located above the belly button.

HIP

Measure around the fullest part of your bottom (20cm below your natural waist).

INSIDE LEG

Measure from the crotch (bottom) to the ankle.

SIZE	XS	S	M	L	XL
WAIST	71cm	76cm	81cm	91cm	96cm
HIP	88cm	93cm	98cm	103cm	108cm
INSIDE LEG	84cm	84cm	84cm	84cm	84cm
INSIDE LEG (CROPPED)	74cm	74cm	74cm	74cm	74cm

OFFBEAT SUAVE *Est.* MMXV

THROWAWAY TWENTY

TROUSERS + SHORTS



HOW TO MEASURE

WAIST

Measure around the natural waistline, which is located above the belly button.

HIP

Measure around the fullest part of your bottom (20cm below your natural waist).

INSIDE LEG

Measure from the crotch (bottom) to the ankle.

SIZE	XS	S	M	L	XL
WAIST	71cm	76cm	81cm	91cm	96cm
HIP	88cm	93cm	98cm	103cm	108cm
INSIDE LEG	84cm	84cm	84cm	84cm	84cm
INSIDE LEG (CROPPED)	74cm	74cm	74cm	74cm	74cm

OFFBEAT SUAVE *Est.* MMXV

THROWAWAYTWENTY

JACKETS, COATS, BOMBERS + PARKAS



HOW TO MEASURE

CHEST

Measure across the widest part of the chest, under the armpits and around the back.

WAIST

Measure around the natural waistline, which is located above the belly button.

HIP

Measure around the fullest part of your bottom (20cm below your natural waist).

SIZE	XS	S	M	L	XL
CHEST	92cm	97cm	102cm	107cm	112cm
WAIST	76cm	81cm	89cm	91cm	96cm
HIP	93cm	98cm	103cm	108cm	113cm

OFFBEAT SUAVE *Est.* MMXV

THROWAWAY TWENTY

SWEATSHIRTS + HOODIES



HOW TO MEASURE

CHEST

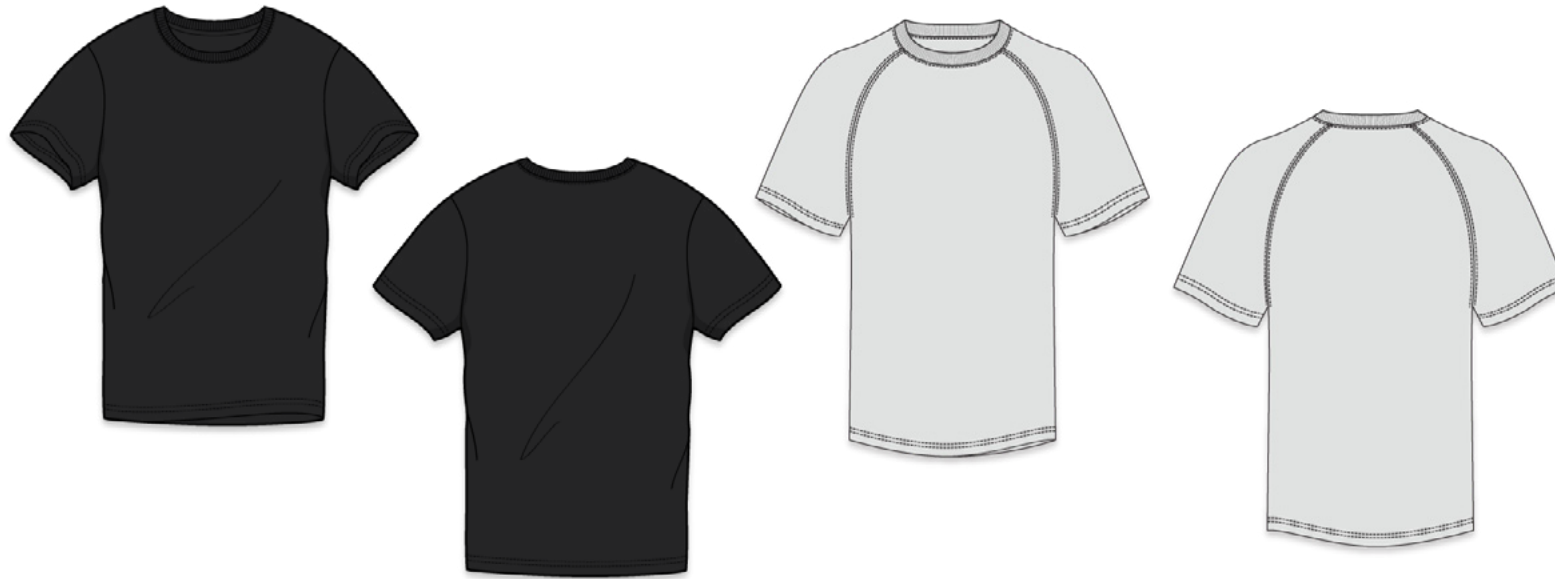
Measure across the widest part of the chest, under the armpits and around the back.

SIZE	XS	S	M	L	XL
CHEST	92 cm	97 cm	102 cm	107 cm	112 cm

OFFBEAT SUAVE *Est.* MMXV

THROWAWAY TWENTY

T-SHIRTS



HOW TO MEASURE

CHEST

Measure across the widest part of the chest, under the armpits and around the back.

SIZE	XS	S	M	L	XL
CHEST	92 cm	97 cm	102 cm	107 cm	112 cm

OFFBEAT SUAVE *Est.* MMXV

THROWAWAY TWENTY

FORMAL + CASUAL SHIRTS



HOW TO MEASURE

CHEST

Measure across the widest part of the chest, under the armpits and around the back.

WAIST

Measure around the natural waist-line, which is located just above the belly button.

SLEEVE LENGTH

Bend your elbow at a 90° angle by placing your hand on your waist. Measure from the middle of the back of your neck to your shoulder, down your arm to the elbow and then to the wrist.

NECK

Measure all the way around the neck with the tape resting just above the nape (bone at top of spine) and under the Adam's apple.

SIZE	XS	S	M	L	XL
CHEST	92 cm	97 cm	102 cm	107 cm	112 cm
WAIST	76 cm	81 cm	86 cm	91 cm	96 cm
SLEEVE LENGTH	90 cm	91 cm	92 cm	93 cm	94 cm
NECK	38 cm	39 cm	41 cm	43 cm	44 cm